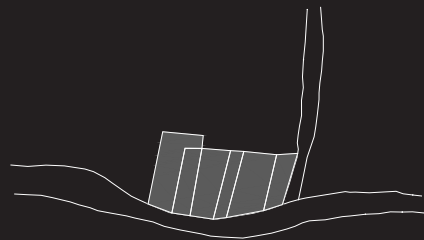




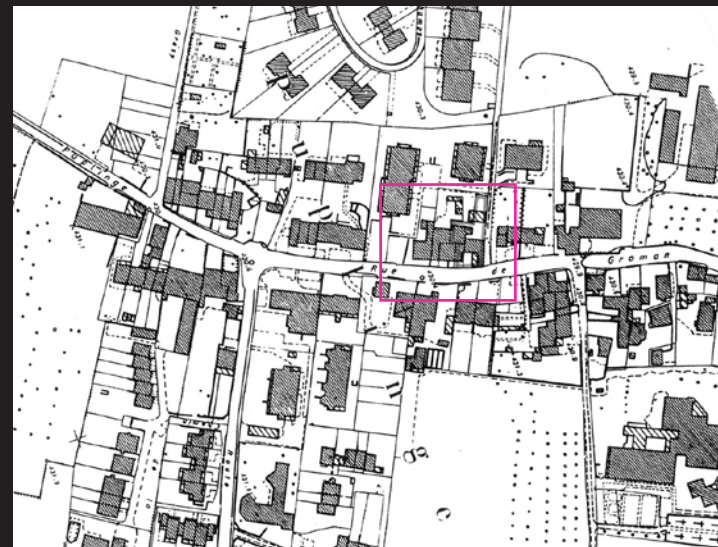
transformation d'un corps de ferme en habitation __ puplinge __ 2003

omarini_architecture

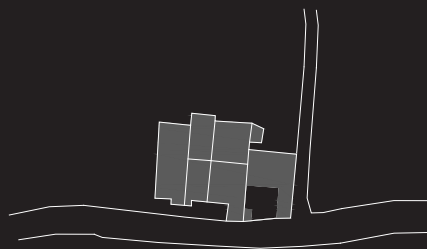
Cadastre D _ 1672-1762



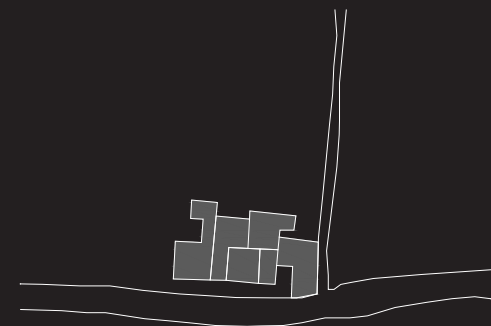
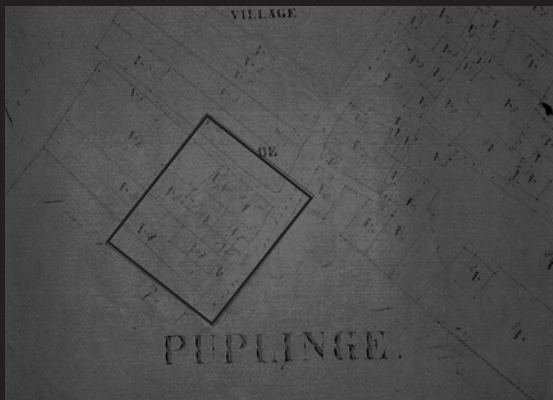
Extrait du plan d'ensemble n° 76 _ 2002



Cadastre E _ 1806-1825



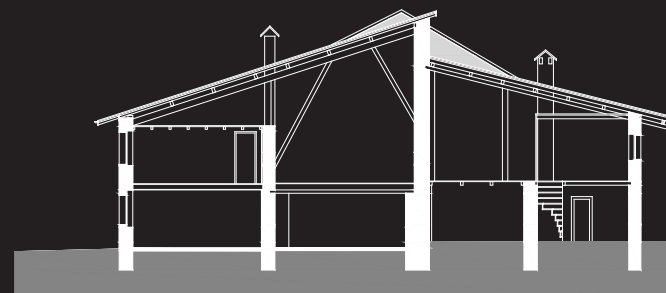
Cadastre F _ 1843-1852



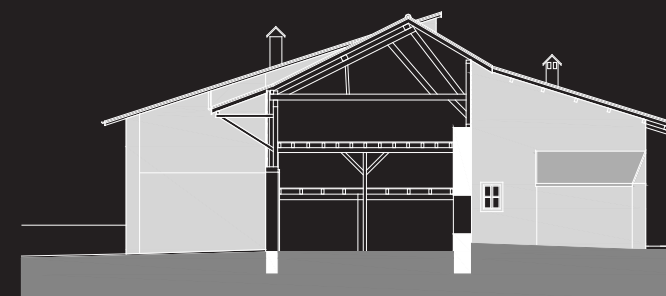
plan rez_relevé



coupe 1_relevé

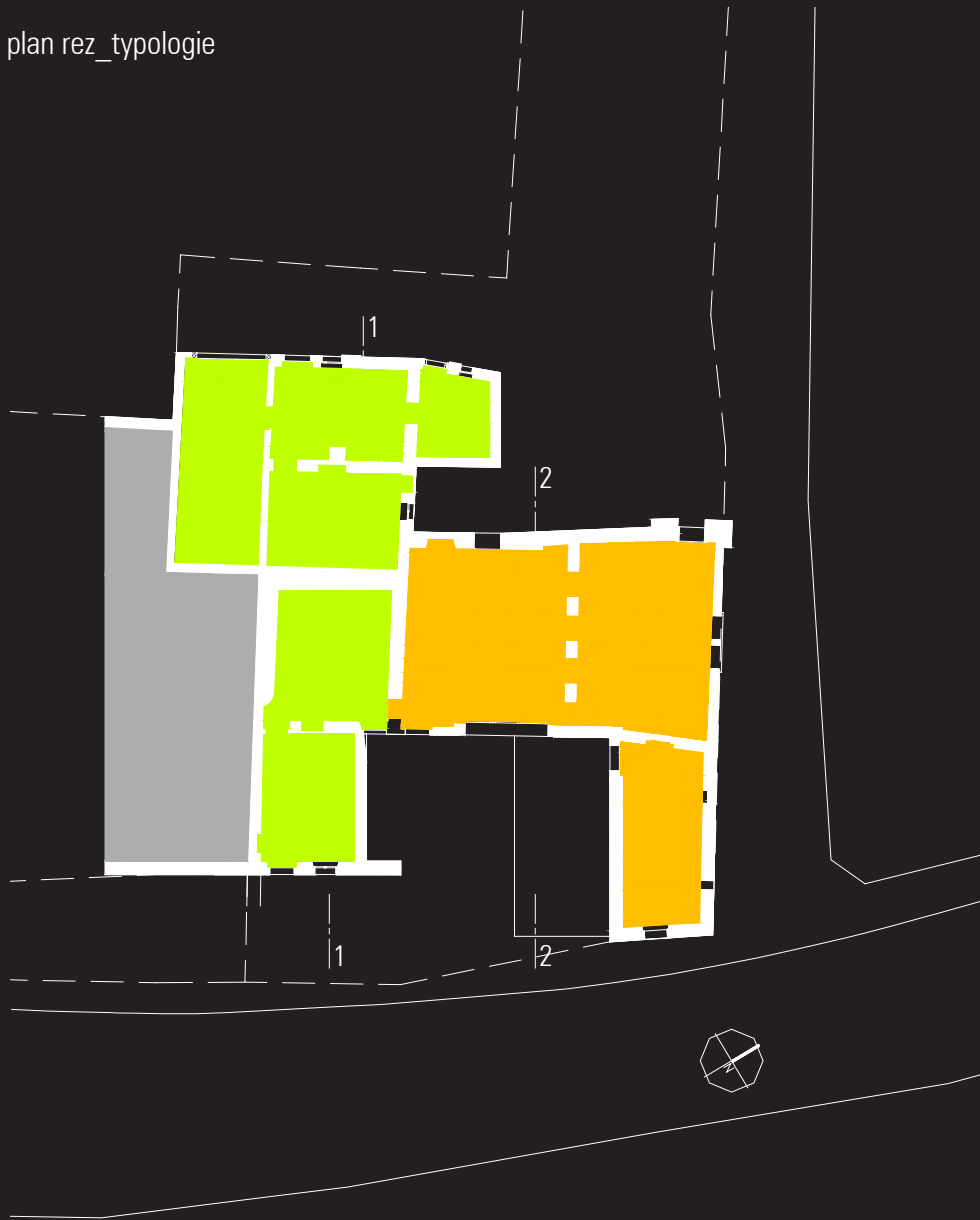


coupe 2_relevé

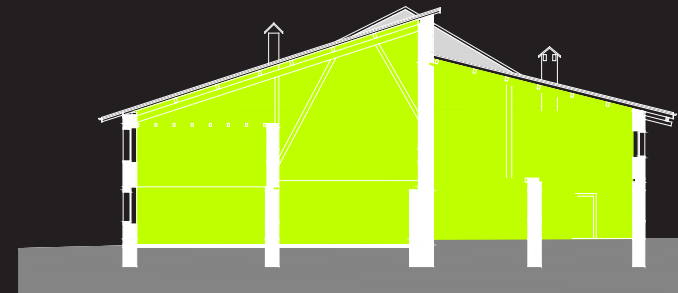


surface totale rez_202 m2
cube sia total_1600 m3

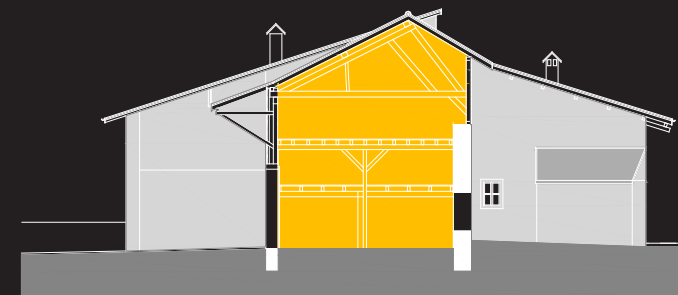
plan rez_typologie



coupe 1_typologie



coupe 2_typologie

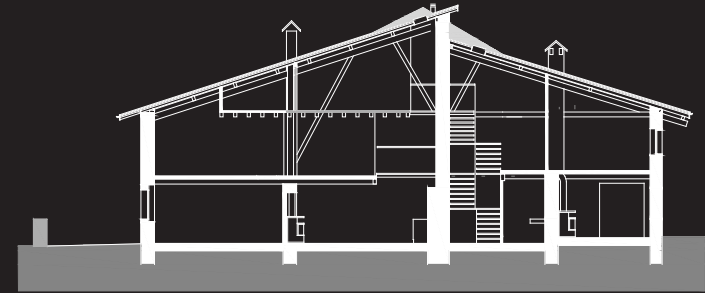


surface rez 1_107 m2
surface rez 2_95 m2

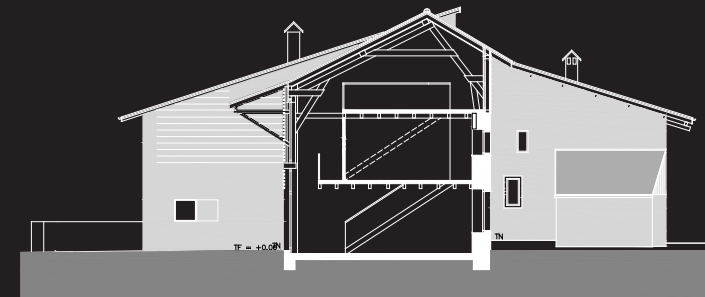
plan rez_projet



coupe 1_projet



coupe 2_projet

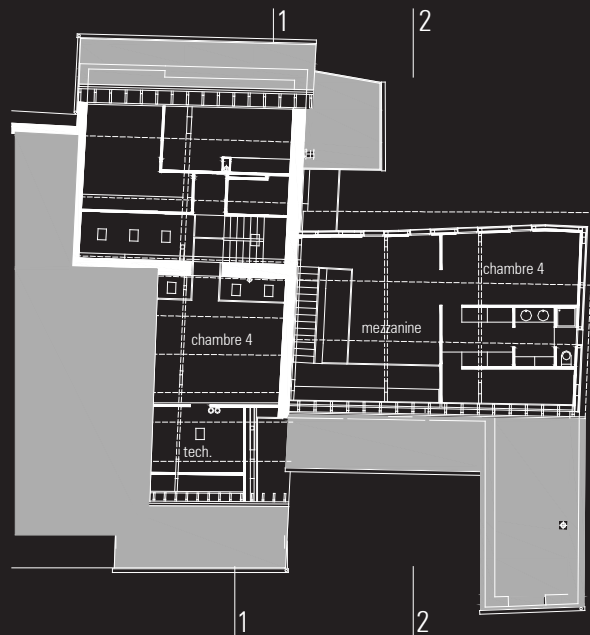


surface habitable 1_214m² m²
surface habitable 2_217m² m²

plan 1er_projet



plan combles_projet



plan toiture_projet



façade est_relevé



façade est_projet



façade ouest_relevé



façade ouest_projet



façade est_relevé



façade est_réalisation



façade ouest_relevé



façade ouest_réalisation



façade ouest_relevé



façade ouest_réalisation



façades_réalisation





